

Virtual Analysis Computers (VMs)

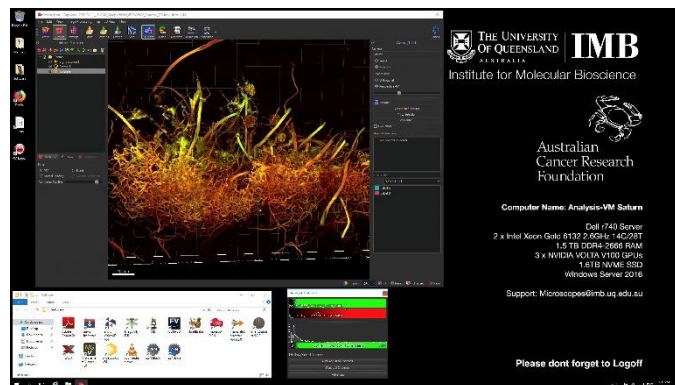
Quick-start Guide

Location: Remote

(Updated: 17/4/2020)

Connection Software:

Remote Desktop



Available Computers

- Cupid (384GB RAM, 1x P4000 GPU) [Cupid.imb.uq.edu.au]
- Hercules (1TB Ram, 3x V100 GPUs) [Hercules.imb.uq.edu.au]
- Lucifer (1TB RAM, 3x V100 GPUs) [Lucifer.imb.uq.edu.au]
- Saturn (1.5TB RAM, 3x V100 GPUs) [Saturn.imb.uq.edu.au]

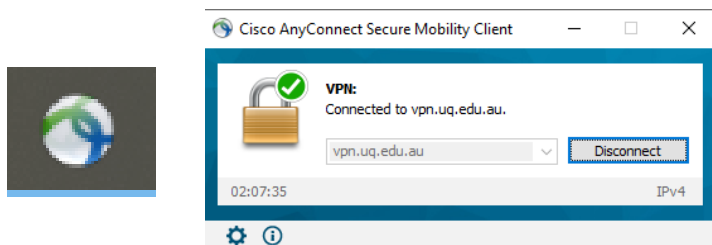
Available Software: Amira*, Arivis Vision 4D**, Arivis SIS Converter**, FIJI, FlimFit, Handbrake, Huygens**, Imaris, Imaris Stitcher, Imaris Converter, LAS X**, Microvolution***, NIS-Viewer, SBConverter, Slidebook, TeraStitcher, VLC, Zen Blue, Zen Black

*Access to Amira VM at QBI, **Available on Saturn VM only, ***Available from within FIJI

Local Cache Storage: These computers have a minimum of 4TB local scratch space. This is not backed-up and all users can delete data on this drive to make space as required.

Connecting to VMs Remotely

If you are working from home, or off-site (from IMB) or via WiFi, you will need to connect to the UQ-VPN (Virtual Private Network) before connecting to the VM computers. To do this you will need the Cisco AnyConnect VPN software and an IMB associated UQ-SSO account.



Address: vpn.uq.edu.au

Credentials: UQ-SSO

Connecting to Network attached Storage

- Data you acquire on this device should be backed up to a server for future retrieval and use.
- The IMB has access to a number of servers both internally managed, as well as UQ-wide resources, think carefully where you would like to store your data.
- Internal IMB Server address include:
 - **IMB Share**
 - Backed up
 - Group shared server
 - [\\imbshare.imb.uq.edu.au](https://imbshare.imb.uq.edu.au)
 - **IMB Transfers**
 - Not backed up
 - Deleted every 7 days
 - [\\transfers.imb.uq.edu.au](https://transfers.imb.uq.edu.au)
 - **Objective Server**
 - Microscopy only
 - Not backed up
 - [\\objective.imb.uq.edu.au](https://objective.imb.uq.edu.au)
- UQ-wide resources:
 - **UQ RDM**
 - Project based shared drive
 - Can be cached locally ([\\data.imb.uq.edu.au](https://data.imb.uq.edu.au))
 - For more information see rdm.uq.edu.au
 - All IMB Cached RDMs are linked via [\\uq.edu.au\uq-inst-gateway2](https://uq.edu.au/uq-inst-gateway2)
 - Note this uses UQ-SSO credentials (type `uq\username`)

Notes on Remote Computing

When you book a system via PPMS you can normally arrive at the microscope and if someone is using it (without a booking) you can ask them to leave. This isn't possible with the Remote VMs, instead we have a new program that monitors bookings in PPMS and will force log you out without a booking.

The tool also allows you to extend you booking by 60minutes (if no one else has booked after you), send you email reminders before your session ends, and logout directly.

Connecting to the VMs using Mac OS

Using Self Service download and install Microsoft Remote Desktop 8

Or

Login to the apple store with your private account and download the latest version

Add a Desktop using the Plus “+” button Or Type Command+N

Enter the PC Name: one of the following (only add the ones that appear in PPMS)

Cupid.imb.uq.edu.au
Hercules.imb.uq.edu.au
Lucifer.imb.uq.edu.au
Saturn.imb.uq.edu.au

User Account: Add User Account

User Name: AD\j.bloggs
Password: IMB password
Friendly name: IMB or username etc

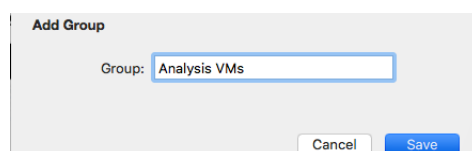
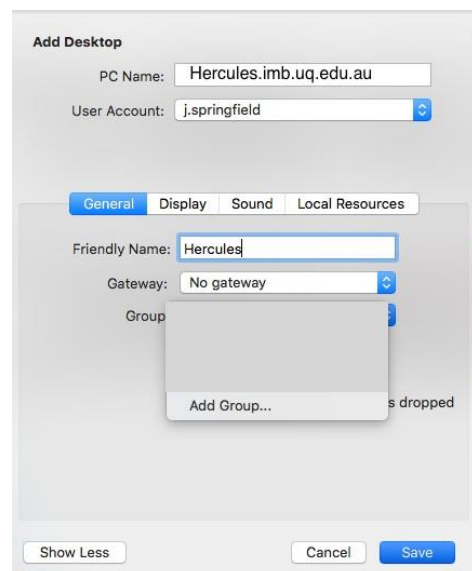
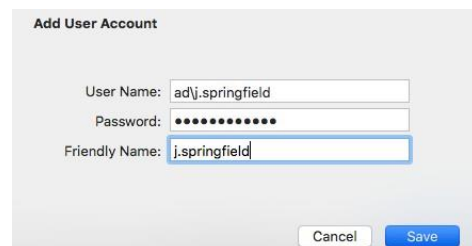
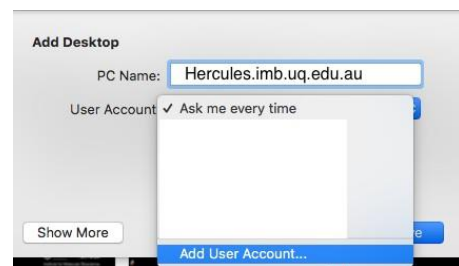
Tick the “Show More” button

General Tab

Friendly Name: Name of the PC you entered above, Example: Hercules

Gateway: Leave empty

Group: you can put the computers into different groups if you like by clicking the “Add Group” Button



Display Tab

- Untick “use all monitors”
- Untick “Start session in full screen”
- Tick “Update the remote session resolution on resize”
- Color Quality: High (32bit)

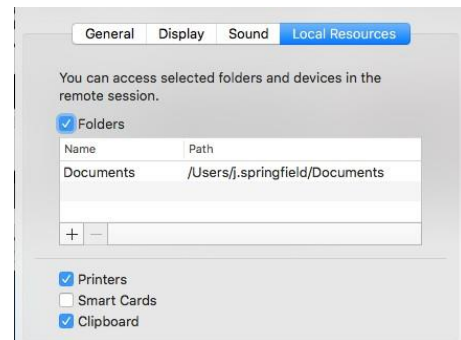


Sound Tab



Local Resources Tab

- Tick “Folders”
- Choose a folder to use on your computer that will also appear on the remote PC, so that you can move files back and forth
- Tick “Printers”
- Tick “Clipboard”



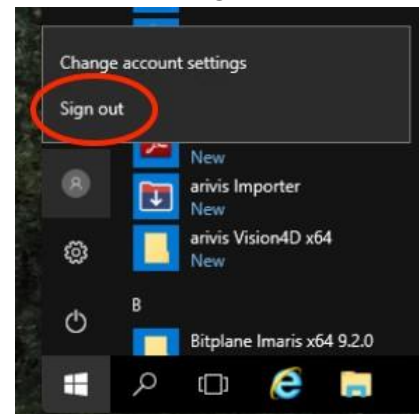
- Click Save
- Click on the newly created PC Icon to connect



- Don't Forget to Log off the Server when you're finished, by double clicking the “VM Logoff” button on the desktop, or by Clicking on the Start button in the bottom left of the screen, clicking on the Person icon and then clicking “Sign Out”.



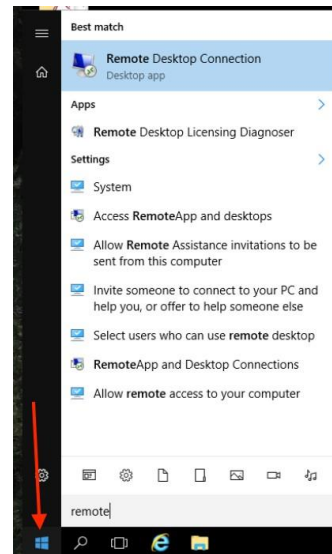
Or



Connecting to VMs using Windows

Click on the Start button at the lower left of the screen and start typing “Remote Desktop Connection”.

The Application will appear in the list, click on it to open the software.

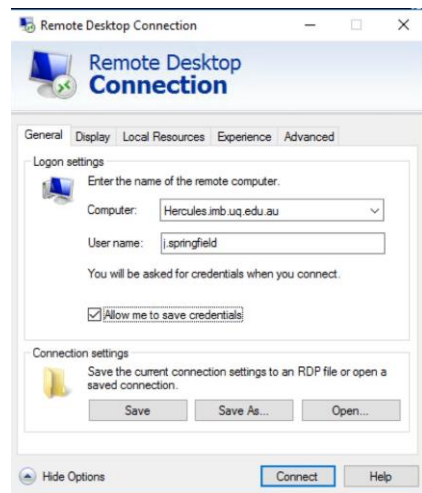


Enter the PC Name: one of the following

Cupid.imb.uq.edu.au
 Hercules.imb.uq.edu.au
 Lucifer.imb.uq.edu.au
 Saturn.imb.uq.edu.au

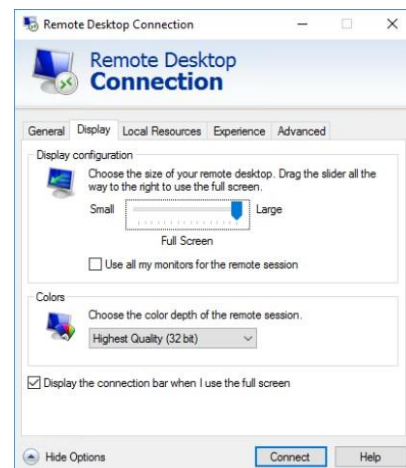
Click on the “Show Options” button in the lower left corner of the window

Enter your IMB username: ADj.bloggs
 Tick the “Allow me to save credentials” tickbox
 Click the “Save” button



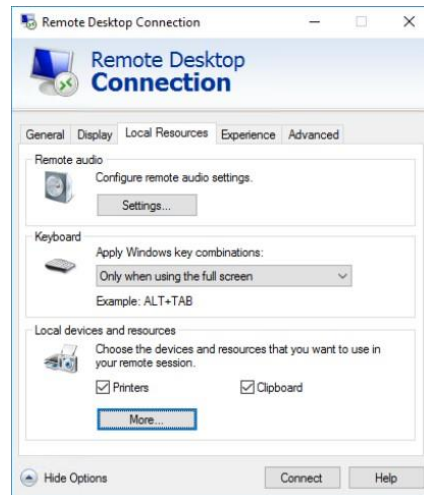
Display Tab

Adjust the slider as required, leave it at Large, unless you have a slow internet connection.



Local Resources Tab

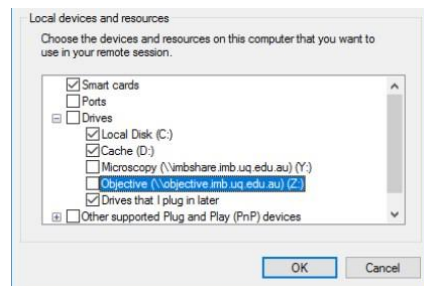
Tick Printers and Clipboard



Click the “More” Button

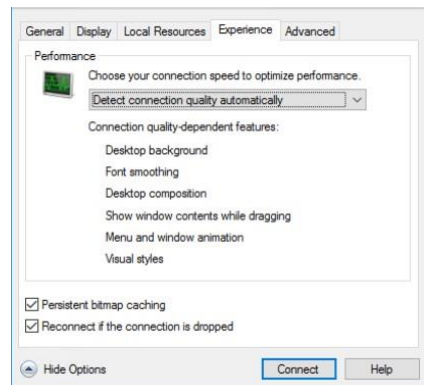
Tick “Drives”

Select the Drives or folders you’d like to share with the remote server



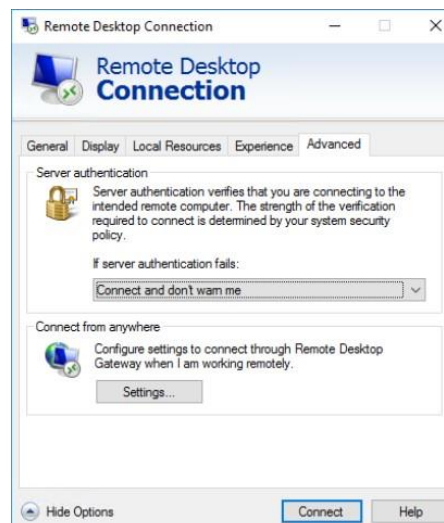
Experience Tab

Detection Connection Quality Automatically

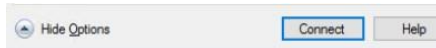


Advanced Tab

If server authentication fails: “Connect and Don’t Warn Me”

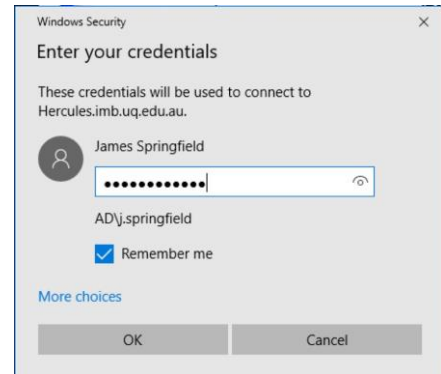


Click “Connect” button



Type your IMB password
Make sure “Remember me” is ticked

Click “OK” button to connect to the Server



If you see this message,
Tick “Don’t ask me again
...” Click Yes



Don’t Forget to Log off the Server when you’re finished, by double clicking the “VM Logoff” button on the desktop, or by Clicking on the Start button in the bottom left of the screen, clicking on the Person icon and then clicking “Sign Out”.



Or

